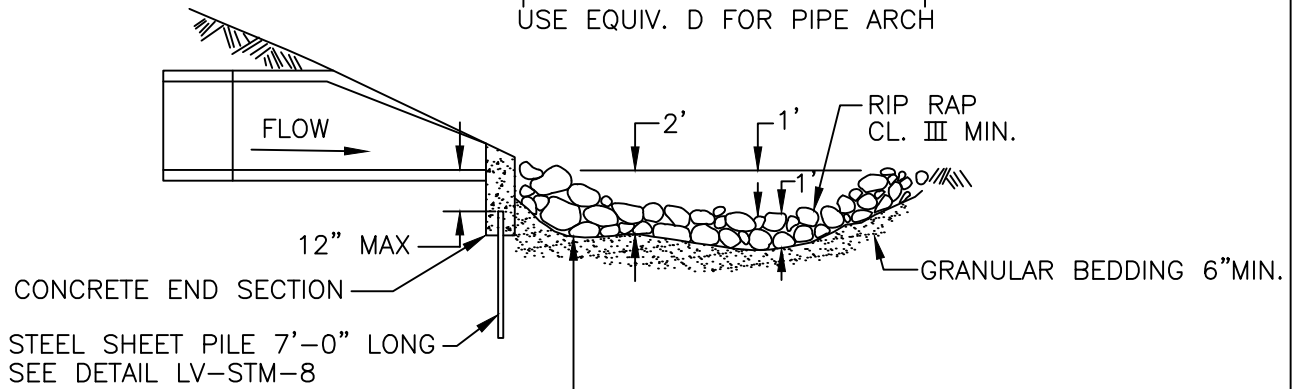
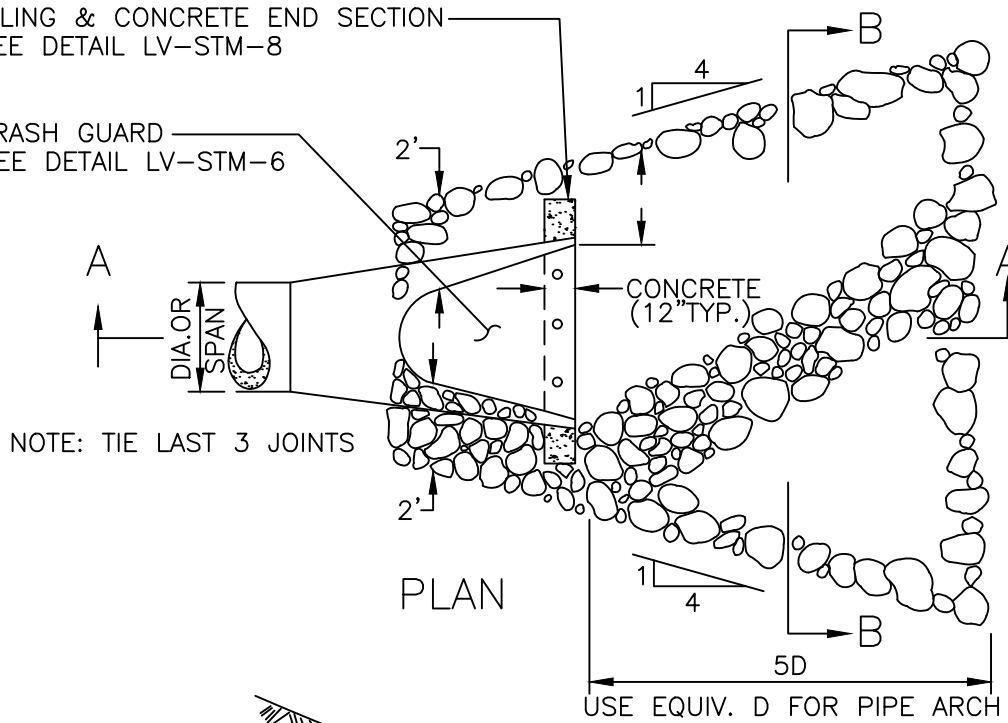


SECTION B-B

PILING & CONCRETE END SECTION  
SEE DETAIL LV-STM-8

TRASH GUARD  
SEE DETAIL LV-STM-6



SECTION A-A

NOTE: PILING & CONCRETE END SECTION  
CONSTRUCTED ON 21" DIAMETER  
PIPE F.E.S. OR LARGER

GEOTEXTILE FILTER,  
MNDOT TYPE IV INCIDENTAL  
TO CONSTRUCTION OF  
RIP RAP



STORM SEWER  
HAND PLACE  
RIP RAP

PLATE NO. LV-STM-7

DATE 01/2020